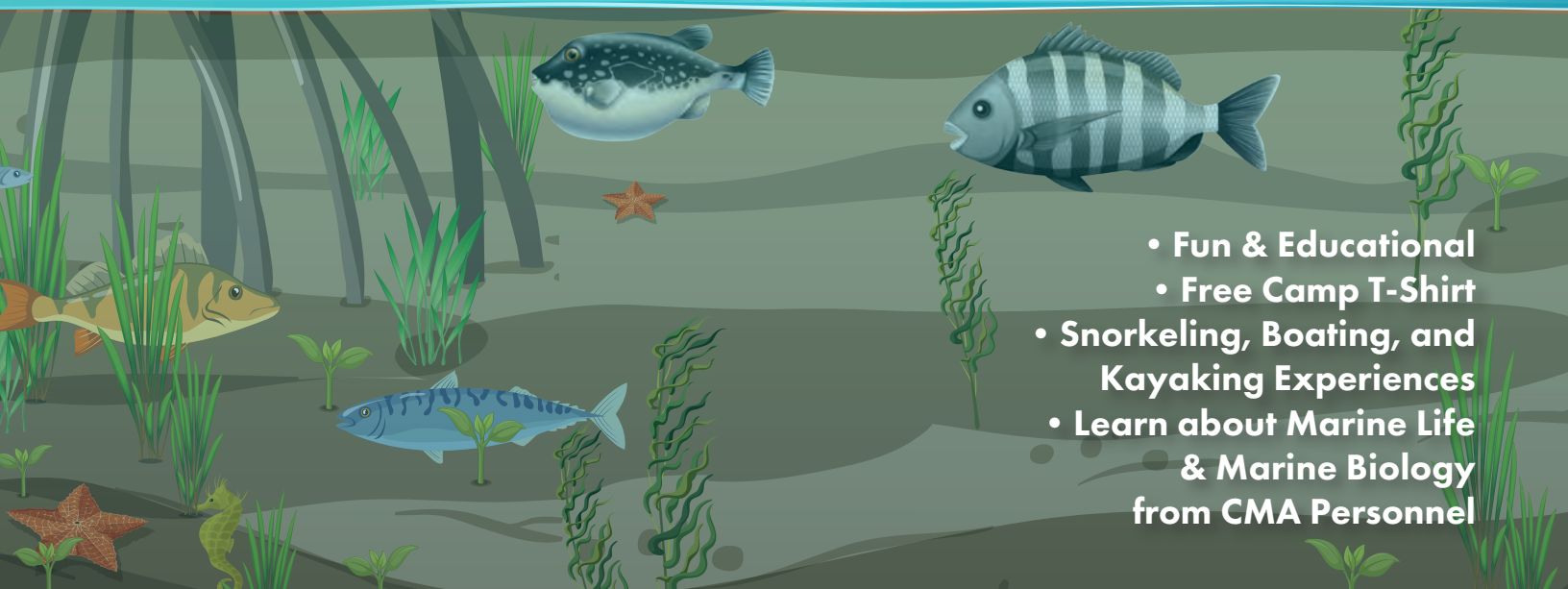
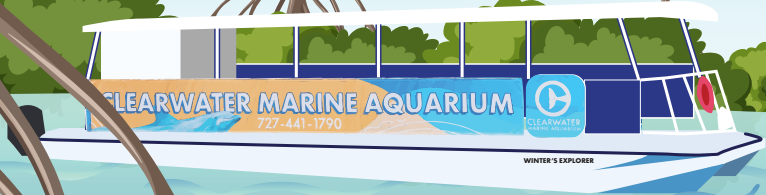


CLEARWATER MARINE AQUARIUM 2025 CAMP FAMILY INFORMATION HANDBOOK



KINDERGARTEN TO HIGH SCHOOL PROGRAMS

June 2 - August 8, 2025



- Fun & Educational
- Free Camp T-Shirt
- Snorkeling, Boating, and Kayaking Experiences
- Learn about Marine Life & Marine Biology from CMA Personnel

WELCOME

Welcome to Clearwater Marine Aquarium's Marine Science Camp and Marine Academy Camps! Our summer camps provide a blend of fun and education through hands-on activities, tours through the aquarium, learning-based crafts, and other engaging educational activities, all designed to foster active participation in a stimulating environment.

Our weekly camps are structured based on the grade level your child(ren) completed in the previous school year. The grade categories include kindergarten to third grade, second to third grade, fourth to fifth grade, sixth to eighth grade, and ninth to twelfth grade. It's crucial to register your camper for the appropriate grade-level camp to ensure a tailored and effective learning experience.

We prioritize creating a safe and enjoyable learning environment. Our camps are closely monitored by a dedicated team of CMA staff members and college-age interns, all of whom have undergone thorough background screenings. All educators are certified in First Aid and CPR/AED. Additionally, Clearwater Marine Aquarium proudly holds the KultureCity Sensory Inclusive certification.

For camps involving snorkeling, Coast Guard-certified Captains supervise the boats, along with our staff and college-aged interns. Campers always have access to standing water during snorkeling activities, and prior snorkeling experience is not required. Participant numbers adhere to Coast Guard boating regulations to ensure camper safety.

For safety considerations, including boat and classroom capacities, as well as other constraints, it's important to note that we are not able to overbook any of our camp programs. We appreciate your enrollment in Clearwater Marine Aquarium camps, and this booklet contains essential details to ensure a successful program for you and your family.

- CMA Camp Staff

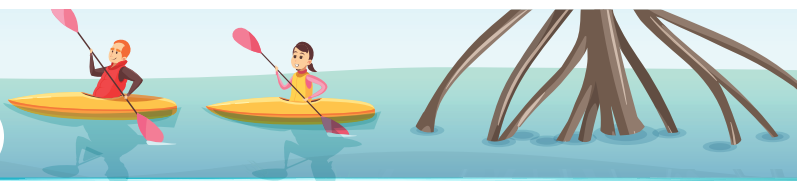


TABLE OF CONTENTS

Guardian Gathering Night Information Sessions	3
Summer Camp Times & Registration Policies	4
Lunches & Snack Information	5
Camp Gear Packs, T-Shirts, & Mid-Day Extended Care	6
Drop Off & Pick Up Procedures	7-10
Medical Policies; Accommodation Requests	11
Camp Attire, What To Bring To Camp, What Not To Bring To Camp	12
Behavior Policies	13
Inclement Weather Policy; Boat Safety; Lost & Found	14
Camp Restroom Procedures	15
Camp Animal Encounters	16

IMPORTANT TELEPHONE NUMBERS

- Supervisor of Conservation Education Programs: 727-441-1790, Ext. 2270
- Manager of Conservation Education Programs: 727-441-1790, Ext. 2116
- Director of Conservation Education: 727-441-1790, Ext. 2252
- Vice President of Conservation Education: 727-441-1790, Ext. 2231

GUARDIAN GATHERING NIGHTS

Join us virtually for one of our Guardian Gathering Nights designed just for you — our valued camp guardians!

Whether you're a seasoned CMA camp family or gearing up for your first summer camp adventure with us, our virtual sessions are designed to provide invaluable insights into our most frequently asked questions. This is also an opportunity for guardians to connect with our dedicated camp staff, allowing you to gain a comprehensive understanding of what to expect and ensuring a seamless experience for both new and returning families.

Here's what you can anticipate during these sessions:

- Get an overview of the latest policy and procedure changes for 2025, ensuring your experience aligns seamlessly with our commitment to safety, education, and enjoyment.
- Ease first-day jitters by asking all of your questions before arriving at camp.
- Discover your camp's exciting excursions and get a snapshot of our fun-packed schedules!

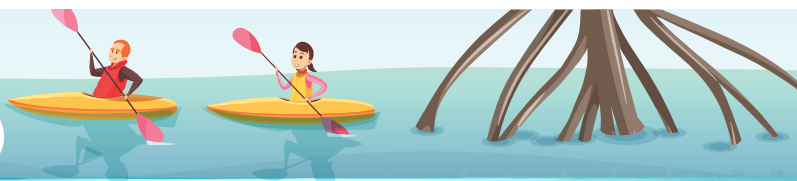
JOIN US FOR A GUARDIAN GATHERING NIGHT:

May 6th, 2025, at 5:00 PM

May 28th, 2025, at 6:00 PM

June 25th, 2025, at 5:30 PM

Virtual meeting information will be sent out via email after registration.



SUMMER CAMP TIMES & REGISTRATION POLICIES

CAMP TIMES

- Each camp is a 5-day program, scheduled Monday through Friday of the chosen week.
- Morning camp sessions operate from 8:30 am to 11:30 am.
- Afternoon camp sessions run from 1:00 pm to 4:00 pm.
- For a full-day camp experience, you have the option to purchase both morning and afternoon sessions in the same week (8:30 am to 4:00 pm).
- Animal Care 101, Ecosystem Advocates, Field Investigation, and Advanced Marine Biology are full-day camps running from 8:30 am to 4:00 pm.

GENERAL REGISTRATION GUIDELINES

- Space is limited, and camps fill up quickly. Register for summer camps online at cmaquarium.org.
- No email, in-person, or phone reservations will be accepted.
- CMA's Marine Science Camp and Marine Academy Camp are designed for participants aged 5 to 18. To join, campers must be a minimum of 5 years old, have completed Kindergarten, and be no older than 18, currently in high school or having graduated within the most recent semester when their camp begins. For Advanced Marine Biology, campers must be 15 by the day their camp begins. Age verification may be requested prior to the first day of camp.
- Campers should be registered for a grade-level specific camp based on the grade level completed during the 2024-2025 school year. Clearwater Marine Aquarium reserves the right to cancel or alter reservations for campers registered inaccurately into a grade-level specific camp.
- During the enrollment process, complete the registration form in full.
- A receipt will be emailed upon completing your reservation. Save and print the receipt to bring it with you on the first day of camp.

REFUND AND CANCELLATION POLICY

Refunds on camp payments will be processed once written notification has been submitted by emailing the Supervisor of Education Programs at camps@cmaquarium.org. In the event of a cancellation, **an 80% refund will be issued if the written cancellation request is received 15 days or more before the first day of camp. Cancellations 14 to 5 days prior to the camp start will receive a partial refund of 50% of the total cost. Cancellations 4–0 days prior to the camp start will NOT receive a refund. Full or partial refunds will NOT be issued to summer campers who attend one or more days of camp.** Make-up days will not be offered for absences from camp. Clearwater Marine Aquarium reserves the right to separate or combine camps. Clearwater Marine Aquarium also reserves the right to cancel a camp for any reason. If your camp is canceled, you will be contacted a minimum of three 3 days in advance. We require a minimum of three (3) participants per camp session. If we do not meet the minimum required participants by the Wednesday prior to camp, the camp will be canceled, and full refunds or rescheduling will be conducted.

DATE CHANGE POLICY

Date changes will be considered on a case-by-case basis upon receiving a written request via email to the Supervisor of Conservation Education Programs at camps@cmaquarium.org. Date changes are subject to availability and may require approval from Clearwater Marine Aquarium's Education management.

The new camp date must have open spots. The easiest way to secure your date change is to book the new camp date on our website, then email the confirmation (including the transaction numbers) for both the camp you're canceling and the one you're switching, to camps@cmaquarium.org. We will fully refund the camp you cannot attend.

If you'd prefer to transfer your registration without waiting for a refund, email us the transaction number for the camp you're canceling and the details of the camp you wish to move to (which must have available spots). We will process the switch and send you a modified confirmation.

For all other cancellations, please refer to our camp cancellation refund policy.

NO TIME TO PACK A LUNCH? NO PROBLEM!

LUNCH

Catered lunches can be purchased for an additional **\$40.00 + tax** for the week for campers who are enrolled in both the morning and afternoon session or mid-day extended care. For those purchasing lunch, lunches must be purchased for the entire week; single day purchases are not available. It is recommended that you also send your camper with two snacks and water even if purchasing lunches for the week. Campers are also welcome to bring their own lunch to camp. Please note that there is no refrigeration or microwave oven available; do not send items that are highly perishable or require heating. Please pack your camper's lunch in a container with their name on it. **No other food will be available for purchase** at camp beyond the pre-paid catered option.

We are not able to meet special dietary requests for the catered lunches. Parents are strongly encouraged to provide your own lunch and/or snacks if your child cannot or will not eat the items on our menu.

LUNCH MENU*

All lunches will be served with a drink, dessert, and one of the following: fresh chips, a fruit cup, or baby carrots with ranch dressing.

Lunches on particular days cannot be substituted.

- Monday – Turkey & Cheese Sandwich
- Tuesday – Cheeseburger
- Wednesday – Pizza
- Thursday – Chicken Tenders
- Friday – Corn Dog Nuggets

*CMA reserves the right to substitute if necessary.

CAMPER ALLERGIES

Clearwater Marine Aquarium will make every reasonable effort to reduce the risk to children with severe allergies or anaphylaxis. The Aquarium is not free of food items and non-food items that may lead to a severe allergic or anaphylactic reaction. **Due to a significant increase in severe nut allergies, CMA will no longer allow items containing peanuts or tree nuts in camp.** Please pack your camper's lunches and snacks accordingly and refrain from packing items that contain nuts such as trail mix, granola bars, hazelnut spread, and peanut butter. We greatly appreciate your help in keeping our campers safe and healthy. It is the parent's responsibility to inform the Supervisor of Conservation Education Programs verbally and in writing that their child has an allergy, is anaphylactic, or potentially anaphylactic. This must also be listed in the camper registration form.

CAMP GEAR PACKS, T-SHIRTS, & MID-DAY EXTENDED CARE

MID-DAY EXTENDED CARE

Mid-day Extended Care is a supervised lunch time designed for parents requiring late pick-up after the morning camp or early drop-off before the afternoon camp. This program allows campers to rehydrate, refuel, and have lunch as a group. *Mid-day Extended Care is automatically included for campers enrolled in both morning and afternoon sessions.*

Morning Session Campers with Mid-Day Extended Care: Pick-up will be between 11:30 am and 1:00 pm.

Afternoon Session Campers with Mid-Day Extended Care: Drop-off is between 11:30 am and 1:00 pm.

Price: \$25.00+tax

Lunch is not provided but can be purchased for \$40 + tax, or campers can bring a packed lunch.

CAMP GEAR PACKS

Ensure you're ready for your summer camp adventure with our Camp Gear Packs, available for purchase during online registration or at Monday morning check-in. **The Camp Gear Packs, priced at \$70.00 + tax, include a CMA bag, mask, snorkel, CMA towel, CMA water bottle, sunglasses, and sunscreen***. While these packs provide most essentials, campers need to bring their own closed-toe water shoes for safety during snorkeling. Closed-toe water shoes are required as the bottom of Clearwater Bay may have sharp and hazardous items.

Price: \$70.00+ tax

*CMA reserves the right to substitute if necessary.

CAMP T-SHIRTS

Campers will receive a complimentary CMA Camp T-shirt for each enrolled camp. **For the safety and supervision of campers, it is highly recommended that campers wear the Camp T-Shirt daily, as it aids our camp staff in easily identifying their campers both inside the aquarium and during field trips.** Since camps can get messy, please ensure your camper also wears camp-appropriate attire along with their CMA Camp T-shirt. Additional Camp T-shirts can be purchased during registration or on the first day of camp.

Price: \$22.00+ tax



DROP OFF & PICK UP PROCEDURES

GENERAL DROP OFF & PICK UP INFORMATION

- For drop-off and pick-up, parents and guardians will enter the parking garage located at 249 Windward Passage, Clearwater, FL 33760.
- **Drop-off and Pick-up Schedule:**
 - **Morning Session:**
 - Drop-off: 8:15 am - 8:30 am
 - Pick-up: 11:30 am - 11:45 am
 - **Afternoon Session:**
 - Drop-off: 12:45 pm - 1:00 pm
 - Pick-up: 4:00 pm - 4:15 pm
 - **Please be advised that the specified periods conclude promptly at the times listed. For late arrivals, you will need to contact the Camp Supervisor at 727-441-1790 x 2270 for additional instructions.**
- For your camper's safety, camp staff will only release your child to an authorized pick-up person with a valid photo ID at sign-out. You will be asked to add all authorized pick-ups for your child during online registration.
 - If your child will be picked up by someone not provided during the initial registration, you will need to notify Clearwater Marine Aquarium staff in person during check-in or by emailing camps@cmaquarium.org. If you fail to notify staff prior to pick up, there may be a delay as Education staff will need to contact the authorized parents/guardians to confirm authorization.
- All persons, bags, parcels, and other items may be subject to screening/security checks upon arrival at camp. No weapons of any kind, bicycles, skateboards, recreational scooters, skates, glass containers, or balloons are permitted at CMA for the safety of our guests, animals, and staff. For a full list of prohibited items and activities, please visit our Aquarium Rules page. Campers are encouraged to bring clear bags to reduce wait times during check-in.
- Parents will be notified by email prior to pick up/drop off if there are any changes needed to occur to standard procedure.
- At Clearwater Marine Aquarium, we highly value our guests with disabilities, and we extend a warm welcome to service animals at most locations within our facility. For our policies, a service animal is defined as a dog that is specifically trained to perform tasks or work for individuals with disabilities. To ensure a safe environment, service animals should be kept on a leash or in a harness and be under the control of their owner at all times.
 - We kindly request that pets, aside from certified service animals, not be brought into the building during drop-off or pick-up of your child. This precaution is taken to prioritize the health and safety of our campers, who may have restrictions regarding close contact with pets, as well as to ensure the well-being of the marine animals in our care and enhance the experience for all our guests. We appreciate your understanding and cooperation in maintaining a secure and enjoyable environment for everyone at Clearwater Marine Aquarium.



MONDAY DROP-OFF AND PICK-UP PROCEDURES

- **On Mondays, it is mandatory for each camper to be escorted into and out of the second-floor RO Jacobson Education Center by an adult during pick-up and drop-off.**
- Parents will receive a concise overview of reminders and will have the opportunity to meet the camp staff to ask any additional questions during drop-off on Mondays.
 - During drop-off, campers will be provided with their complimentary Camp T-shirt and any additional items purchased during registration. Additional items such as Camper Gear Packs and extra Camp T-shirts can be purchased at the Welcome Desk.
- Camp staff will only release campers to an authorized pick-up person holding a valid photo ID during sign-out.
 - Authorized pick-ups are specified during the registration process.
 - In the event that someone not initially authorized will be picking up your child, please inform Clearwater Marine Aquarium staff either in person during check-in or via email at camps@cmaquarium.org.
 - Failure to notify staff in advance may result in delays, as Education staff will need to contact the authorized parents/guardians to confirm authorization.
- **Parents and guardians are welcome to temporarily park on the second floor of the parking garage for a maximum of 25 minutes. Reserved parking spaces on the second floor are allocated for camp families on Mondays only. Cars exiting the garage after 25 minutes will be subject to the standard parking fee per our third-party vendor's policies.** Alternatively, free street parking is available, but you must adhere to local parking laws.



TUESDAY THROUGH FRIDAY DROP OFF

- **Times:**

- o Morning Session and Full-Day Camps: Drop-off is in the car line between 8:15 AM and 8:30 AM.
- o Afternoon Sessions: Drop-off is in the car line between 12:45 PM and 1:00 PM.

- **Location:**

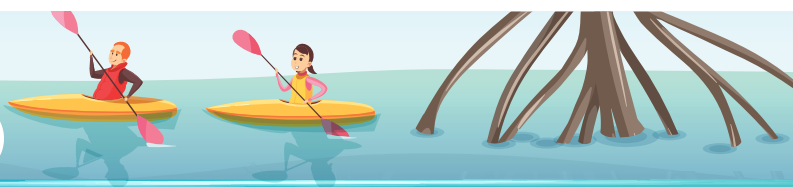
- o The designated car line area for camper arrival and dismissal is located on the first floor within the parking garage. Upon entering the parking facility, kindly adhere to the guidance provided by the parking attendant, who will direct you to the designated camp car line.

- **Procedure:**

- o For morning and full-day camps, drop-off is conducted in the car line between 8:15 AM and 8:30 AM, while for afternoon camps, drop-off is in the car line between 12:45 PM and 1:00 PM. Parents are asked not to gather in the parking garage or drop campers off before 8:15 AM or 12:45 PM.
- o Campers and parents must remain in their cars until a Marine Science Summer Camp personnel can check in or out of the camper(s).
- o Once out of the car, the camper(s) will be escorted into or out of the building by a Marine Science Summer Camp team member.
- o Walk-up arrivals will be checked in by a Marine Academy staff member at the first-floor parking garage entrance, near the spiral staircase.
- o For arrivals after the designated drop-off times, please contact the Supervisor of Conservation Education Programs in advance, if possible.
 - If your camper is running late, please call the Camp Supervisor at 727-441-1790 x 2270 for further instructions on the best drop-off location based on your estimated arrival time. If there is no response, please leave a voicemail, and we will return your call with the drop-off location instructions as soon as possible.
 - PLEASE NOTE: If your camper is scheduled to participate in a snorkeling trip, kayaking trip, or field trip, they must be dropped off on time. **We will not delay these excursions for late arrivals.** If your camper arrives late, they may need to join a different camp group, which may not align with their age, until the excursion returns.
- **Cars exiting the garage after 25 minutes will be subject to the standard parking fee per our third-party vendor's policies.**
- No reserved spaces are allocated for camp families Tuesday through Friday. Alternatively, free street parking is available, but you must adhere to local parking laws.

- **Purchasing Items:**

- o Camper Gear Packs and extra Camp T-shirts are available for purchase at the welcome desk any day of the week.
- o Leaving your car unattended in the drop-off/pick-up zone is not permitted. Parents and guardians may temporarily park in the parking garage for a maximum of 25 minutes if there are spots available to make these additional purchases.



TUESDAY THROUGH FRIDAY PICK UP

- **Times:**

- **Morning Session:** Pick-up is in the car line between 11:30 AM and 11:45 AM.
- **Afternoon Session and Full-Day Camps:** Pick-up is in the car line between 4:00 PM and 4:15 PM.

- **Location:**

- The designated car line area for camper dismissal is located on the first floor within the parking garage. Upon entering the parking facility, kindly adhere to the guidance provided by the parking attendant, who will direct you to the designated camp car line.

- **Procedure:**

- For morning camps, pick-up is conducted in the car line between 11:30 AM and 11:45 AM, while for afternoon and full-day camps, pick-up is between 4:00 PM and 4:15 PM. Parents are asked not to gather in the parking garage before 11:30 AM or 4:00 PM.
- Walk-up dismissals will be checked-out by a Marine Science Summer Camp staff member outside the first-floor parking garage doors near the spiral staircase outside the aquarium.
- A Marine Science Camp staff member will confirm the identity of the person picking up your camper by checking a valid ID that matches a name on the authorized pick-up list before allowing the camper to be signed out. Checking out each camper with an authorized adult is mandatory and may take several minutes. We sincerely appreciate your patience as we prioritize the safety of our campers.
 - Authorized pick-ups are specified during the registration process.
 - In the event that someone not initially registered will be picking up your child, please inform Clearwater Marine Aquarium staff either in person during check-in or via email at camps@cmaquarium.org.
 - Failure to notify staff in advance may result in delays, as Education staff will need to contact the authorized parents/guardians to confirm authorization.
- Parents and guardians are not permitted to leave your car unattended in the drop-off/pick-up zone. Parents and guardians may temporarily park in the parking garage for a maximum of 25 minutes if there are spots available. **Cars exiting the garage after 25 minutes will be subject to the standard parking fee per our third-party vendor's policies.**
- No reserved spaces are allocated for camp families Tuesday through Friday. Alternatively, free street parking is available, but you must adhere to local parking laws.

- **Early Pick-up Requests:**

- For camper(s) requiring pick-up before 11:15 am or 3:45 pm, contact the Camp Supervisor by phone or email prior to the camp day. No early pick-ups are permitted between 11:15 am and 11:30 am or 3:45 pm and 4:00 pm.
- Failure to notify Education staff of an early pick-up in advance may lead to delays in camper retrieval, with potential wait times of 30 minutes or more.
- PLEASE NOTE: If your camper is scheduled for an offsite activity, such as a snorkeling trip, kayaking trip, or field trip, they may not return until the scheduled pick-up time. These excursions will not return early for early pick-up requests. However, if your camper will be picked up early and staff is notified ahead of time, arrangements can be made for your camper to join a different camp group that is not on an excursion. Please note that this group may not align with your camper's age, and they will remain with that group until the time of the early pick-up.



MEDICAL POLICIES

DAILY MEDICATION

For the safety of our campers, we have a strict policy for the handling of medication at camp. If your camper is required to take medication during camp hours, **please provide the medication in packaging with the pharmacy label, clearly marked with the camper's legal name, medication name, and dosage instructions.** The medication must have been administered at home at least once (first-time medication use cannot occur at camp). Please fill out the Medication Authorization to Dispense form, which will be provided by camp staff at check-in or via a link in the camp reminder emails sent out the week before your camp session. We will not administer medication that is past its expiration date, and medication cannot be stored with your child's belongings (except for epi-pens). Please hand the medication and the completed form to your camper's Camp Teacher, who will store it in a locked bag in their backpack. We cannot administer any prescription medication without proper written permission. If the Medication Authorization to Dispense form is not fully completed or does not match the prescription label, we will notify you that we will be unable to dispense the medication.

EPI-PENS

If your child has an Epi-pen, you will be required to attest that they have been trained by a physician and are fully knowledgeable about how and when to use the Epi-pen. If your child needs to use their Epi-pen, we will immediately call 911 and assist with the administration. All camp personnel have been trained in Epi-pen administration and will assist when needed. Epi-pens can be carried in camper gear with parent permission.

ILLNESS OR INJURY AT CAMP

In case of an emergency, 911 will be called immediately. Children not well enough to follow the day's activities will not be allowed to attend camp. This includes children with the following symptoms: vomiting, fever, early cold, discharging eyes, stomach pain, active rash, diarrhea, sore throat, and/or nausea. While attending camp, if a child exhibits signs of illness they will be isolated from other campers and kept comfortable while the emergency contact and/or parent/guardian is notified. You will be asked to pick up your camper if they show any of the following symptoms: fever 100°F or higher, severe and persistent cough, vomiting, conjunctivitis (pink eye), sore throat, ringworm, lice, severe headache, or any symptoms of COVID-19 as outlined by the CDC recommendations during the camp period. We continuously refine our health protocols based on guidance from governmental agencies such as the Centers for Disease Control and Prevention, Pinellas County Government, and the Florida Department of Health. Please note that protocols are subject to change in accordance with current recommendations.

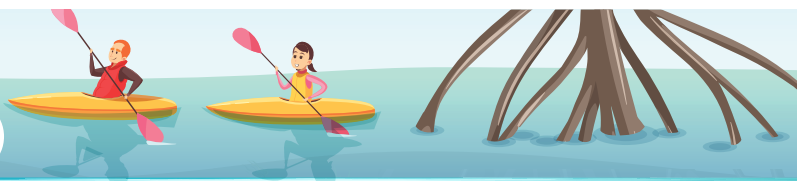
ACCOMMODATION REQUESTS

CMA is dedicated to providing reasonable accommodations, program modifications, and inclusion services to ensure equal access to all services, programs, and activities. If your camper requires any physical or behavioral accommodations for a successful camp experience, exhibits behaviors of concern, or needs accommodations to support their learning style and socialization skills, please begin by registering for your preferred summer camp.

After registration, email camps@cmaquarium.org to request and complete an Accommodation Request form, letting us know how we can best accommodate your child's needs. While we will make every reasonable effort to fulfill accommodation requests, not all requests may be approved. Forms must be submitted at least two weeks prior to your child's camp program. You will be notified at least one week before the camp starts if your request can be accommodated. All information will remain private and will only be shared with the HR team and camp staff directly involved with your child.

If a classroom aide is required, they must be over 18, certified (e.g., as an ABA therapist or certified Behavioral Aide), and complete a background check through the State of Florida at least two weeks prior to camp. Families are responsible for arranging and covering the cost of this background check through CMA's HR team. The camp must have at least two available spots for both your child and the aide. After registering, please notify us immediately so we can reserve a spot for the aide (there is no charge for the second spot). The aide will also need to sign a waiver and a non-disclosure agreement (NDA) prior to the camp starting.

Please note, CMA is wheelchair accessible, with elevators and ramps throughout the facility. However, our snorkeling boats, kayaks, and transport vans are currently NOT wheelchair accessible.



ATTIRE, WHAT TO BRING TO CAMP, WHAT NOT TO BRING TO CAMP

CAMP ATTIRE

Campers should wear comfortable clothing and shoes during their camp sessions. At the beginning of each summer camp, all participants will be provided with a complimentary t-shirt on the first day. If a camper is registered for multiple camps, they will receive a t-shirt at the beginning of each respective camp. **For the safety and supervision of campers, it is highly recommended that campers wear the Camp T-Shirt daily, as it aids our camp staff in easily identifying their campers both inside the aquarium and during field trips.** Additional t-shirts can be purchased through the online registration process, by contacting the Supervisor of Conservation Education Programs at 727-441-1790 x2270, or during drop off at the Welcome Desk.

Clearwater Marine Aquarium is not responsible for any soiled, lost, or stolen items, including clothing. Please be advised that shoes with wheels, such as Heelys or roller sneakers, are strictly prohibited during camp activities. **For snorkeling and/or kayaking camps, closed-toe water shoes are mandatory at all times when in the water, and campers will not be allowed to participate in snorkeling or kayaking without them.** Fins, open-toed sandals, socks, or flip-flops cannot be substituted for closed-toe water shoes.

WHAT TO BRING TO CAMP

For a comfortable and enjoyable camp experience, we recommend the following items for all campers:

- **Snack and Water Bottle:** Pack a peanut/tree nut-free snack and bring a refillable water bottle.
 - o Avoid sending soda or other carbonated beverages in your child's snack and lunch packs, as it may cause bloating and discomfort in extreme heat.
 - o Please send only water or sports drinks to keep your child hydrated.
- **Lunch (if enrolled in Mid-day Extended Care or both Morning and Afternoon sessions):**
 - o Lunches will be kept indoors, but not refrigerated, so please avoid perishable items. Lunches and/or beverages frozen overnight will stay fresh longer. Individual coolers are acceptable if well marked with the camper's name.
 - o Microwaves will not be available to prepare camper lunches. Individual coolers are acceptable, provided they are well-marked with the camper's name.
 - o Note that microwaves will not be available to prepare camper lunches.
- **Backpack:**
 - o Used to transport snorkeling items and/or crafts.
 - o Summer campers should arrive dressed in a bathing suit underneath their camp t-shirt and bottoms each day. For camps with snorkeling activities, it's important to note that the schedule may be affected by inclement weather (please refer to our inclement weather policy).
 - o In the camper's backpack, include closed-toe water shoes, mask and snorkel, towel, undergarments to change into, sunscreen, hat, and insect repellent.
 - o Apply sunscreen before arriving, as our staff can only assist with spray-style sunscreens.
 - o Campers are permitted to bring cameras or cell phones for the purpose of capturing memories during camp activities. A virtual background photo series will be professionally taken and made available for purchase through Fintastic Photo. Please be aware that Camp Staff will not take photos of campers during snorkeling, in the classroom, kayaking, or other camp activities. The primary role of our staff is to supervise and ensure the safety of campers. While you are welcome to send a camera or cell phone with your camper, our staff may assist them with taking photos when feasible.
 - o Water shoes are crucial, given the potential hazards on the bottom of Clearwater Bay, including sharp shells. Campers will not be allowed to enter the water without closed-toe water shoes.
- **PLEASE NOTE: CLEARWATER MARINE AQUARIUM DOES NOT SELL WATER SHOES.** Please ensure your camper has closed-toe water shoes before attending camp each day.

WHAT NOT TO BRING TO CAMP

For the optimal camp experience, we kindly request that campers refrain from bringing toys, video games, iPads, and other electronic devices to camp. Additionally, we advise against bringing jewelry, money, and other personal valuables. While we understand that some campers may carry cell phones for communication with parents, we recommend discussing the importance of limiting phone use during camp hours with your child. Although campers are allowed to bring cell phones, it is strongly advised that they refrain from using them during camp activities. To maintain a focused environment, campers may be instructed to stow away any electronic device that may cause distraction or disruption. **Please note that Clearwater Marine Aquarium holds no responsibility for items that are misplaced, damaged, and/or stolen during the camp duration.**

BEHAVIOR POLICIES

CAMP RULES

To ensure a safe and positive experience for all campers, our camp families must familiarize themselves with the following rules. Failure to comply with these rules may result in consequences, including dismissal from camp at the discretion of staff. Any form of bullying, whether physical or emotional, is considered inexcusable and may lead to immediate dismissal from camp. Your cooperation in reinforcing these rules with your child(ren) is crucial for maintaining a safe and enjoyable camp environment. Please review these guidelines with your child(ren) or dependent(s) before the camp begins.

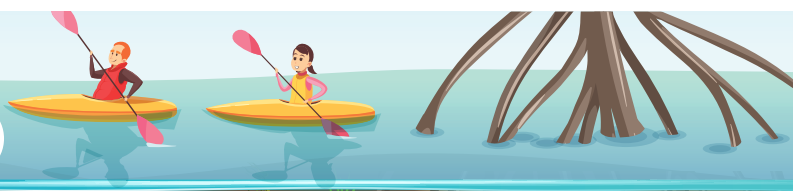
1. Be respectful and follow the directions of all Clearwater Marine Aquarium staff.
2. Stay with your assigned camp group at ALL times.
3. WALK to all areas and destinations.
4. Be respectful of your fellow camper with your words and respect the personal space of others. Inappropriate behavior, such as swearing, teasing, lying, touching, hitting, horseplay, and/or bullying, is not allowed.
5. Be respectful of the animals and their environments.

DISCIPLINE POLICY

Our camp is committed to maintaining a positive environment through a discipline policy focused on positive reinforcement, redirection, prevention, and the development of self-discipline. To uphold a safe and inclusive learning atmosphere, all campers are expected to adhere to the camp rules. Violation of these rules may result in consequences, including dismissal from camp. In the event of a rule violation, the following actions will be taken:

1. A verbal warning will be issued by the camp teacher for the first occurrence of inappropriate behavior, with discussions shared with parents at pick-up.
2. A second or more serious offense will prompt a discussion with Clearwater Marine Aquarium staff, addressing the situation and group concerns. Additionally, parents will be provided with a Note of Unsatisfactory Conduct, which requires a signed acknowledgment.
3. Campers displaying repeated offenses may face dismissal from camp without a refund. A final determination for expulsion will be made by a member of the management staff of the Education Department. It's crucial to note that any form of bullying is inexcusable and grounds for immediate dismissal from camp.

This Discipline Policy serves as a guide, and Clearwater Marine Aquarium reserves the right to bypass steps when deemed appropriate. Our primary goal is to minimize the necessity for disciplinary measures, prioritizing the safety of all campers, staff, and animals. Your registration and attendance at marine summer camp signify your agreement to adhere to these discipline guidelines.



INCLEMENT WEATHER POLICY; BOAT SAFETY; LOST & FOUND

INCLEMENT WEATHER POLICY

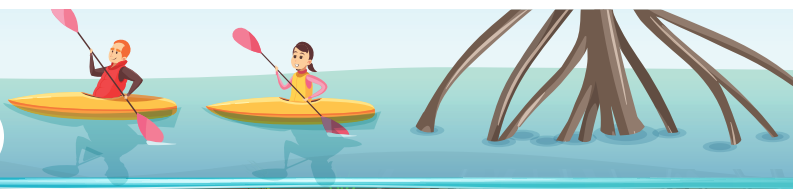
Florida is prone to thunderstorms, tropical storms, red tide, and even hurricanes. There may be times when normal camp schedules need to be altered due to inclement weather or unsafe water conditions, such as extremely high tides rendering the water unsuitable for snorkeling. In these instances, Clearwater Marine Aquarium has indoor classroom activities planned for campers. For camps that include snorkeling, traveling, kayaking, or any other outdoor activities (including animal encounters), we will adjust our outdoor schedules in the event of inclement weather or water conditions for the safety of our campers. We will make every effort to resume normal camp schedules on inclement weather days as soon as possible. **Since Clearwater Marine Aquarium does not have control over inclement weather or water conditions, we cannot guarantee that campers scheduled in these camps will snorkel, travel, kayak, or participate in an outdoor activity every day.** Therefore, we will not issue full or partial refunds due to inclement weather. In the event of a hurricane or other event in which the Aquarium may be subject to closure, please check cmaquarium.org for information on camp operation.

BOAT & KAYAK SAFETY

As per the United States Coast Guard, life jackets are not mandatory on Clearwater Marine Aquarium vessels, but they are available for camps with snorkeling and boating activities. Snorkeling vests will be provided to each camper, and if you prefer your camper to wear a life jacket during snorkeling, kindly inform the camp teacher during sign-in. Our camp boats adhere to Coast Guard certification, equipped with railings and essential safety features. Clearwater Marine Aquarium staff are trained in first aid and CPR. For snorkeling camps, campers will always have access to standing water, and prior snorkeling experience is not required. During kayaking sessions, our Camp Teachers deliver instruction on basic kayaking techniques and equipment to summer campers. Our priority is to create a supportive and enjoyable environment on the water. For safety, all kayakers are mandated to wear life jackets throughout the activity.

LOST AND FOUND

Found items will be securely kept in the camp program's room for the week's camp session. Campers and camp parents can ask the camp staff to check for lost items in their room or at the Marine Academy's front desk. Once the weeklong camp session concludes, any unclaimed items will be held at the Marine Academy's front desk until the end of the summer camp season. If you suspect your child has left an item at camp, please contact us at 727-441-1790 x 2270 or email camps@cmaquarium.org, providing a detailed description of the item. We understand the importance of your belongings and will promptly reach out if we locate them or need additional information. In the event your item is found, the Supervisor of Conservation Education Programs will coordinate with you to schedule a pickup time at the Marine Academy entrance. If you would like an item mailed back to you, please send an email to camps@cmaquarium.org with a pre-paid shipping label for our team to use when returning the item to you. For items lost within the Aquarium and not reported to camp teachers, Clearwater Marine Aquarium's dedicated lost and found service is available at the Guest Experience desk inside the Aquarium. Your cooperation is appreciated as we strive to reunite you with your belongings.



CAMP RESTROOM PROCEDURES

Clearwater Marine Aquarium prioritizes the safety and well-being of our campers through our comprehensive restroom policy. Our commitment includes constant supervision by camp staff and interns during restroom visits, ensuring a secure environment. With measures like open doorway audio supervision, a maximum limit of three campers at a time, and a strict privacy and buddy system, we aim to prevent overcrowding, enhance safety, and foster an inclusive atmosphere. Our inclusive restroom policy aligns with our dedication to creating a comfortable experience for all campers, respecting their gender identity and privacy preferences.

- 1. Accompaniment and Safety Checks:** At least one paid camp staff member will accompany campers to restrooms, ensuring constant supervision. Staff or interns will conduct safety checks to ensure restrooms are free of suspicious individuals before allowing children to use the facilities.
- 2. Supervision:** Staff or interns will stand in the open doorway of multi-stall restrooms, providing audio supervision while respecting children's privacy. Camp staff or interns will monitor the number of campers inside restrooms, with a maximum limit of three at a time. This helps prevent overcrowding, promotes a safer environment, and ensures that staff can effectively monitor to reduce the risk of accidents or unwanted incidents.
- 3. Privacy and Buddy System:** Camp staff will clearly communicate expectations for restroom use and changing clothing to occur in private areas, such as individually locking stalls, to honor each camper's need for privacy. Except in emergency situations, staff, interns, or volunteers should never be inside a restroom stall with a camper. If assistance is required by a camper, another adult must be present, and the door should be held open. Children of any age should always be accompanied by a buddy and a staff member when using Clearwater Marine Aquarium restrooms (excluding the Marine Academy floor) or during off-site field trips. Campers must always be accompanied by a buddy and a staff member must be stationed in the open doorway of multi-stall restrooms in these situations.
- 4. Inclusive Restroom Policy:** Clearwater Marine Aquarium's policy is that team members and guests should use the facilities that correspond with their gender identity. (For example, a person who identifies as a man should use the men's restroom, and a person who identifies as a woman should use the women's restroom.) All team members and guests should determine the most appropriate and comfortable options for themselves. If a camper is uncomfortable using a gender-specific restroom or desires increased privacy, staff will work with the camper to find an option that ensures their comfort. Campers may opt to be escorted to single-occupancy, gender-neutral facilities within the aquarium by a camp supervisor. In such cases, camp staff will be positioned outside the closed restroom door to maintain supervision while respecting the camper's privacy.



CAMP ANIMAL ENCOUNTERS

While all of our camps offer opportunities to see our dolphins during aquarium tours, we do not include hands-on dolphin interactions in any of our camps, except for the Meet & Greet and Animal Encounter camps. These programs include the opportunity to go poolside with an Animal Care Specialist during a session with one of our resident dolphins. Since Clearwater Marine Aquarium operates as a working marine hospital, the health conditions of our resident animals may affect scheduled encounters. While we cannot guarantee encounters on specific days, every effort will be made to reschedule any missed interactions due to animal unavailability or weather conditions. Please note that if your camper is late or absent and misses an interaction, no make-up sessions will be allowed. Additionally, some interactions may require the group to be split in half, with the interactions occurring on different days with different animals. The Meet & Greet and Animal Encounter camps include a poolside session with a resident dolphin.

Opportunities to touch, get wet, or feed the dolphins are not guaranteed during this session. Parents and guardians will not be permitted to watch their camper's interaction session as it will take place before the aquarium opens. A Fintastic Photo photographer will be present to capture these moments. Photos can be purchased through the pre-purchased Adventure Photo Package or individually via a link sent by the Fintastic Photo Team after the camp.

For the safety of the animals, campers must not wear any jewelry (including earrings) during any interaction where they enter an animal's habitat (e.g., the Dolphin Complex area). We recommend refraining from wearing jewelry throughout the week, just in case the schedule changes. Campers will be required to leave all personal belongings at a designated location and remove any foreign objects such as jewelry, hair clips, and bags. Campers will not be permitted to bring cameras or phones poolside. If your child is unable or unwilling to remove their jewelry or other loose articles, they will not be allowed to participate in the interaction and no make-ups will be permitted. There are no exceptions to this rule.

